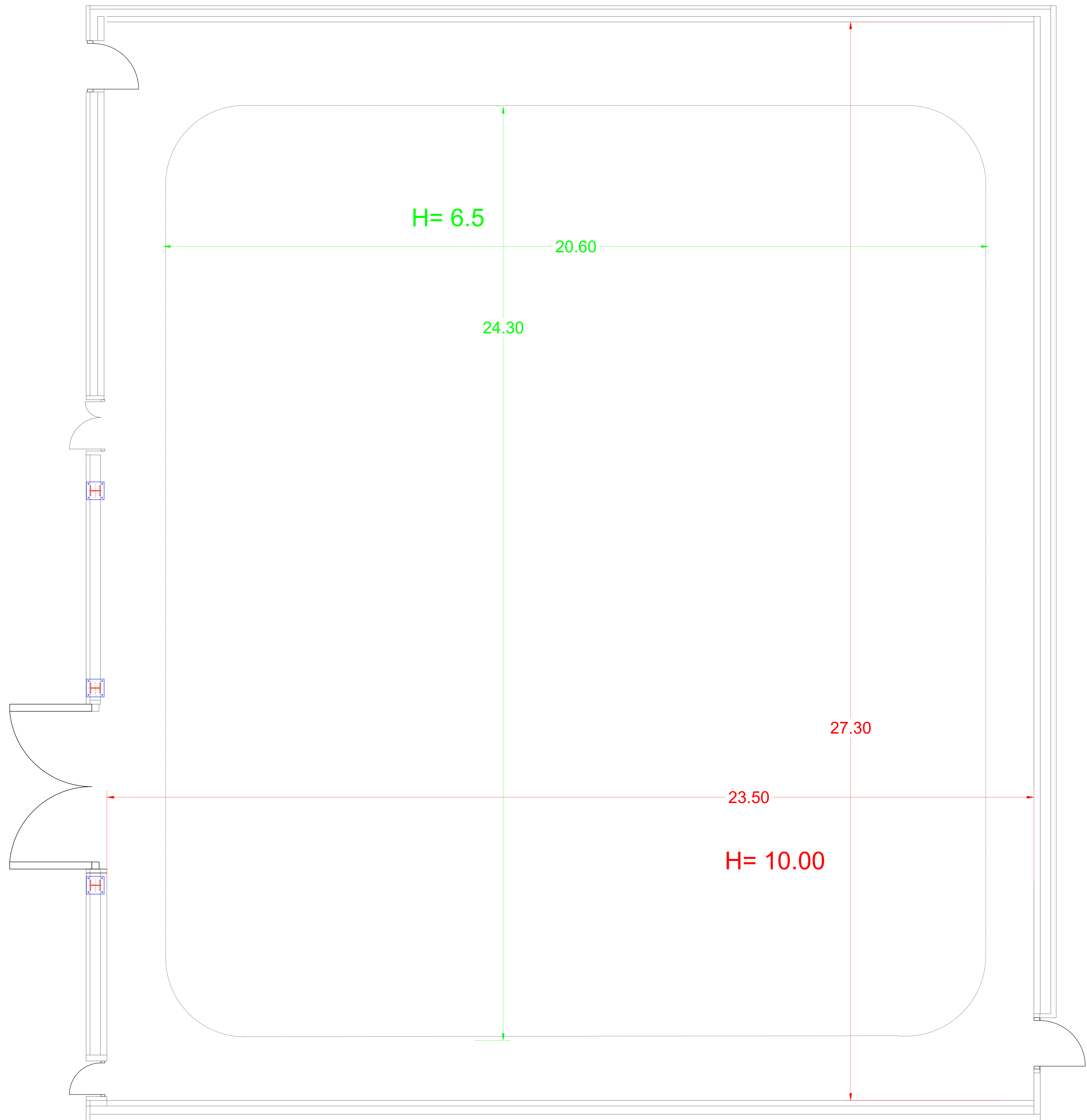


STUDIO 6
Operation Department. Camera and Lighting Section
Studio Dimensions
Structural Dimensions: (L:27.3m, W:23.5m, H:10m)
Effective Dimensions: (L: 24.3m, W: 20.6m, H 6.5m)
Drawn By: Hesham Alyaseen.
Date: 16/11/2023



STUDIO 6

Operation Department,
Camera and Lighting Section

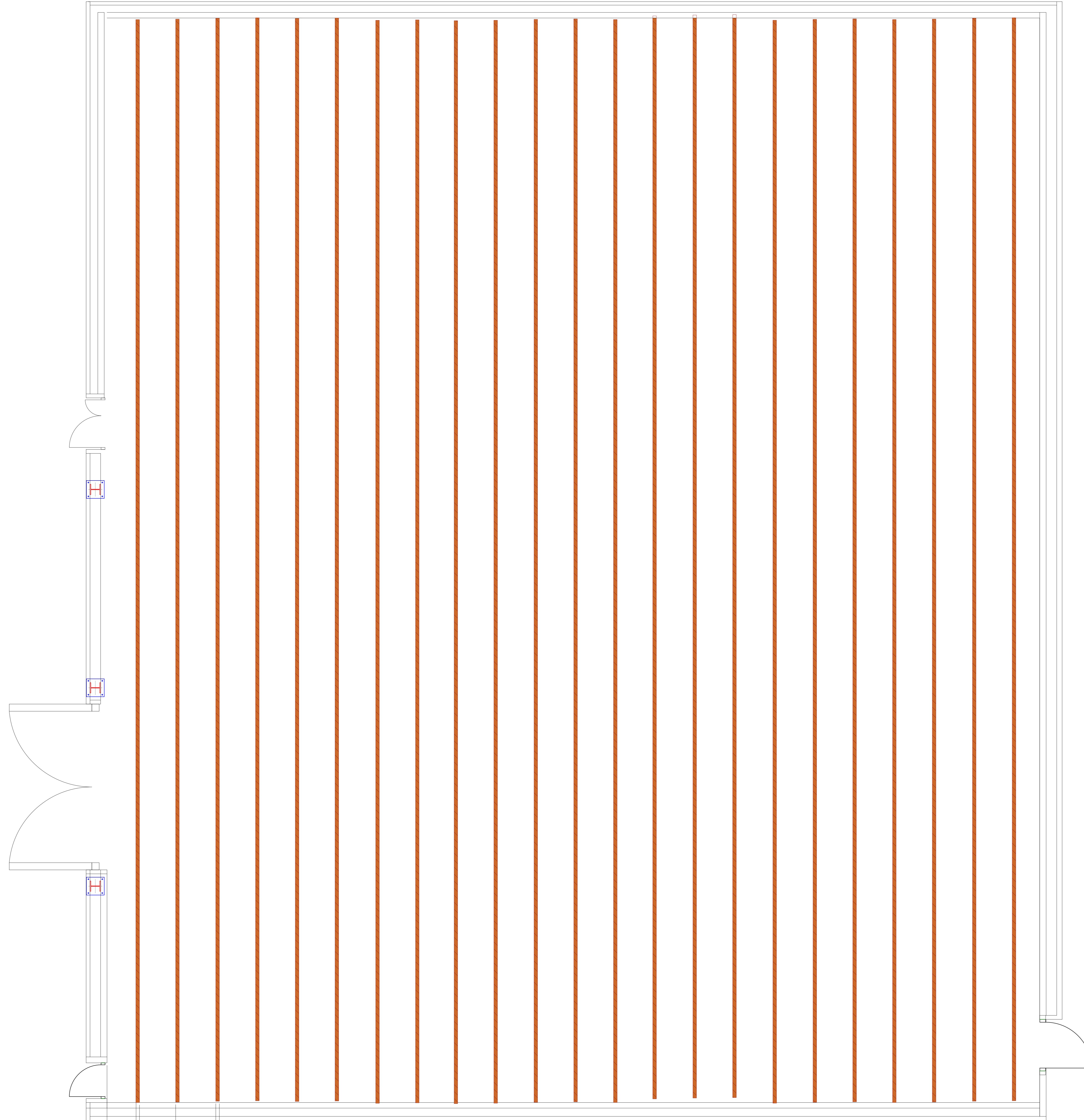
1 Beams Layout

Beam To Beam : 91 cm

Beam Width: 9 cm

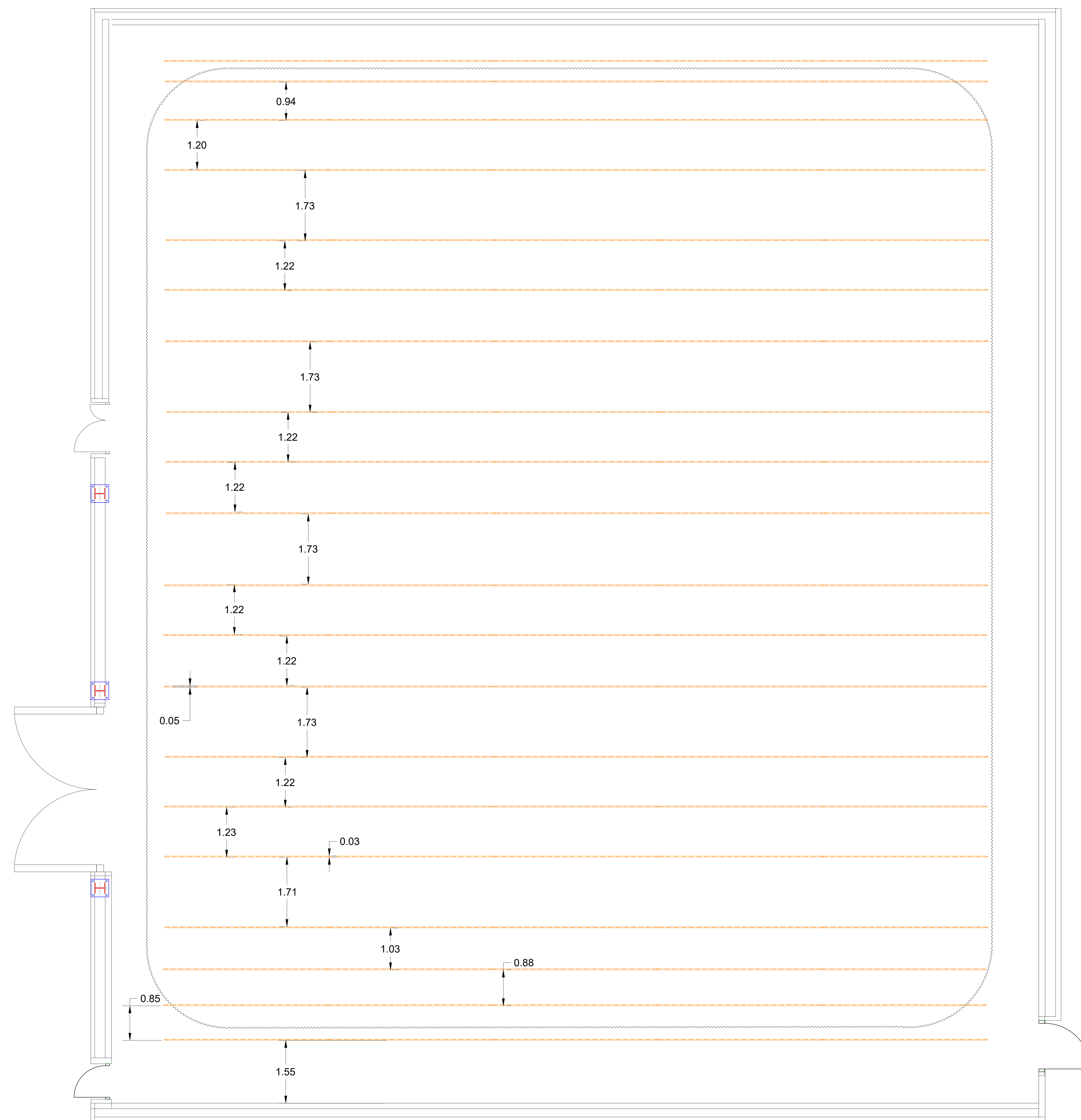
Drawn By: Hesham Alyaseen.

Date: 16/11/2023



0.73 0.91 0.09

STUDIO 6
Operation Department. Camera and Lighting Section
Hoist Carrier Layout
Drawn By: Hesham Alyaseen.
Date : 07/09/ 2023



STUDIO 6

Operation Department,
 Camera and Lighting Section

Hoists and Scenery Layout

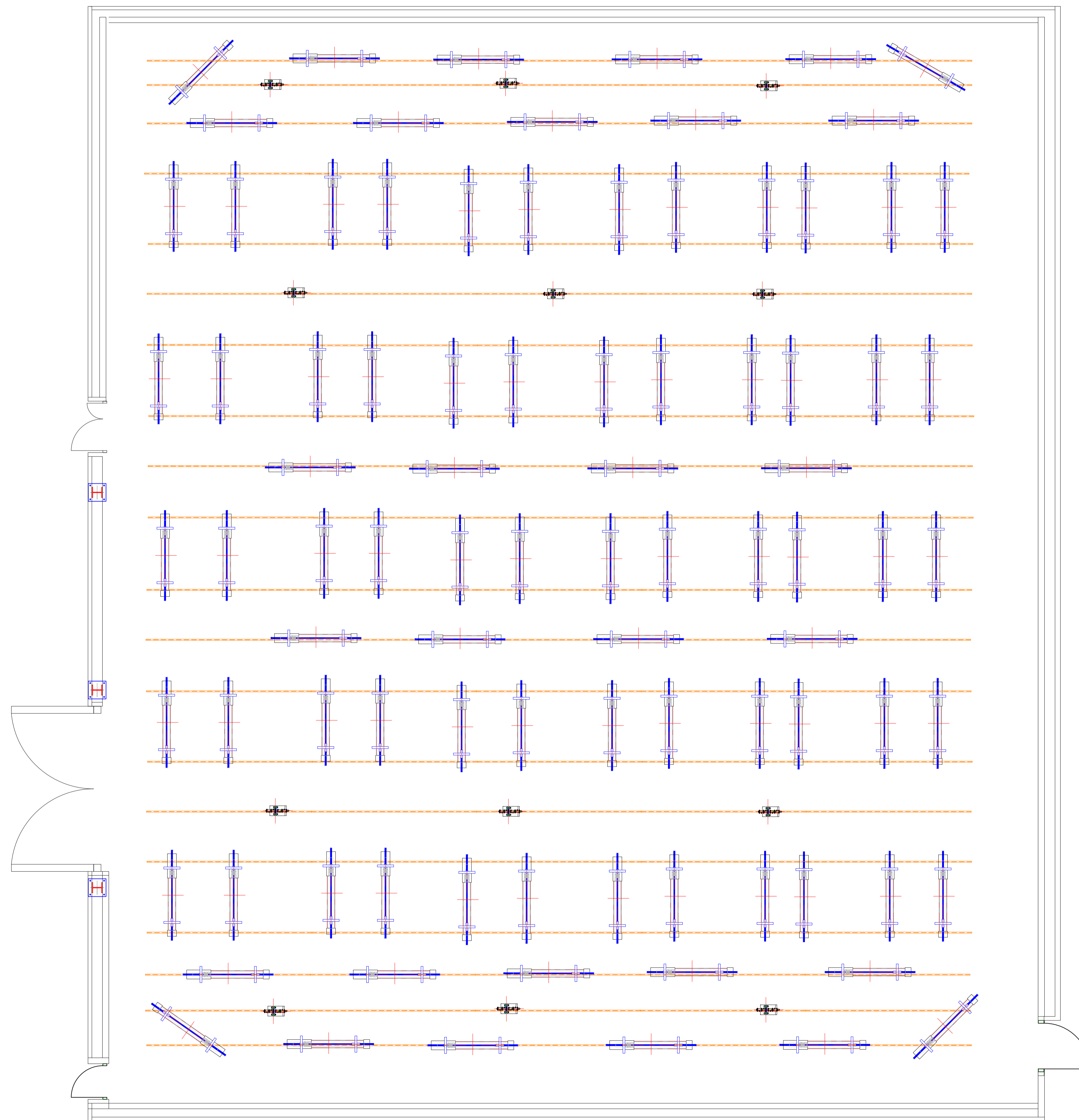
Hoist Brand :De Sisti 8140

Number Of Hoists : 90
 Hoist Capacity 100 Kg

Number of Scenery Hoists: 12
 Scenery Hoist Capacity 200 Kg

Drawn By: Hesham Alyaseen.

Date : 07/12/ 2023



STUDIO 6
Operation Department. Camera and Lighting Section
Hoists and Scenery Numbering
Hoists Number : 1 to 90
Scenery Hoists Number : 91 to 102
Drawn By: Hesham Alyaseen.
Date : 07/12/ 2023

