

|  |
|--|
| STUDIO 2   |
| Operation Department.<br>Camera and Lighting Section   |
| Studio Dimensions                                      |
| Structure dimensions:<br>(L: 16.5m, W: 13.7m, H: 5.8m) |
| Effective Dimensions:<br>(L: 13m, W:11m, H:4.5m)       |
| Drawn By: Hesham Alyaseen.                             |
| Date:29/09/2023  |

STUDIO 2

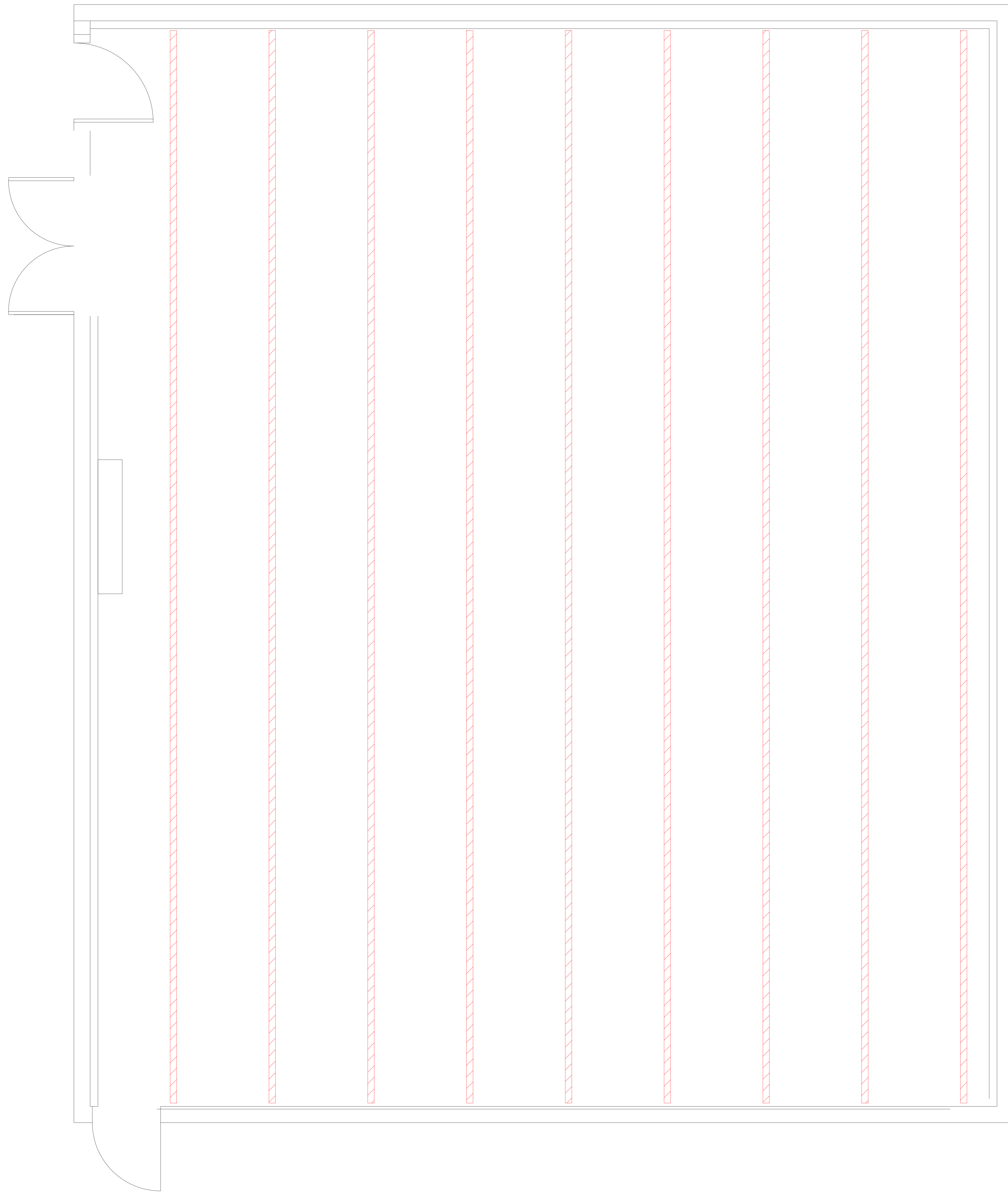
Operation Department.  
Camera and Lighting Section

Beams Layout

Number of beams : 9

Drawn By: Hesham Alyaseen.

Date:29/09/2023



STUDIO 2

Operation Department.  
Camera and Lighting Section

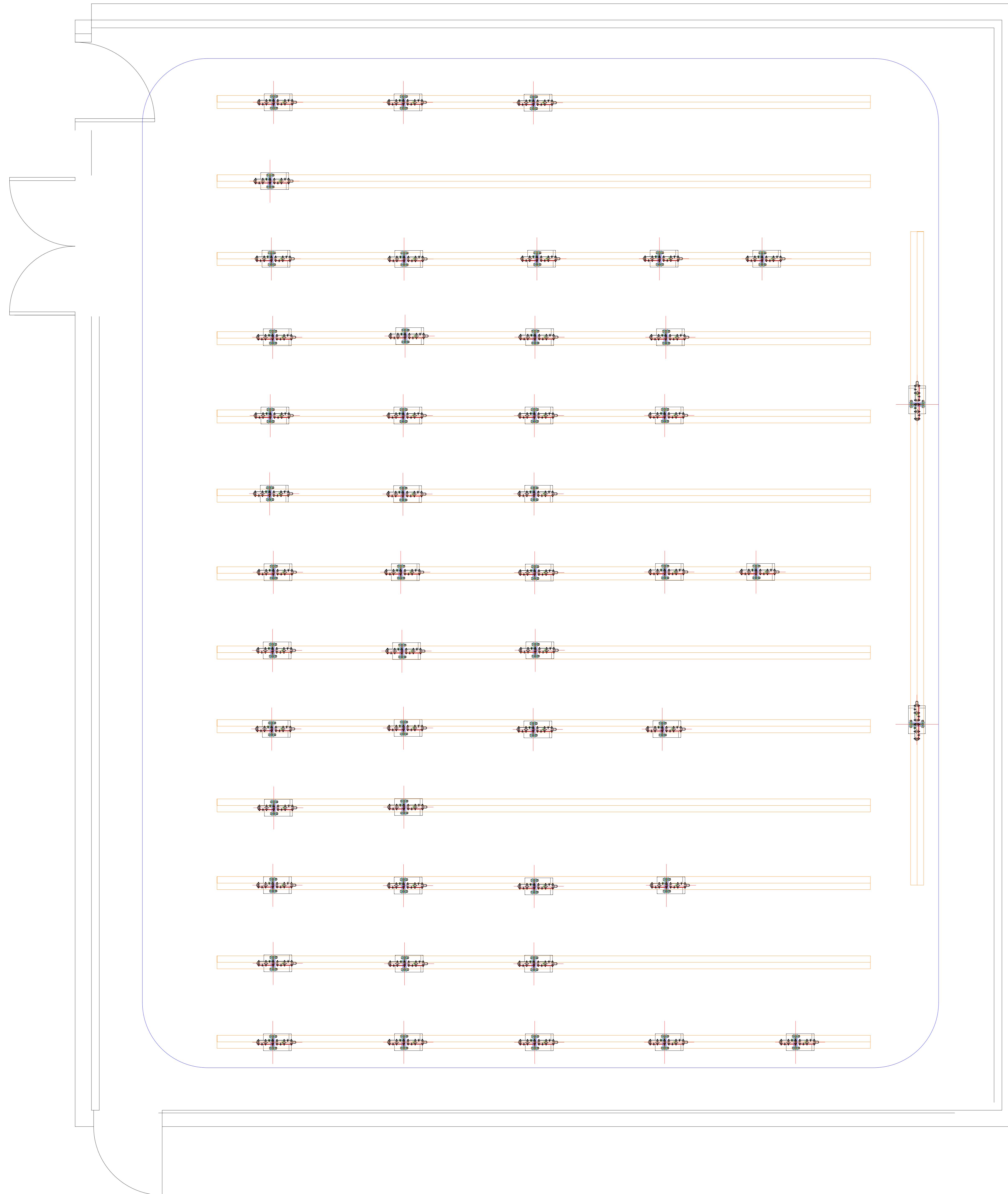
Pantograph and Pantograph carrier

Number of pantograph trays: 13

Number Of Pantographs : 48

Drawn By: Hesham Alyaseen.

Date: 15/11/2023





|  |
|--|
| STUDIO 2   |
| Operation Department.<br>Camera and Lighting Section |
| Power layout   |
| panels at floor Level                                |
| panels at Lighting Grid level                        |
| Drawn By: Hesham Alyaseen                            |
| Date:20/11/2023                                      |

